

# POSTER SESSION

Stephanie Hänsel , Lara Klippel,  
Jennifer Brauch, UNECE secretariat

## Supporting adaptation of the transport system to climate change –

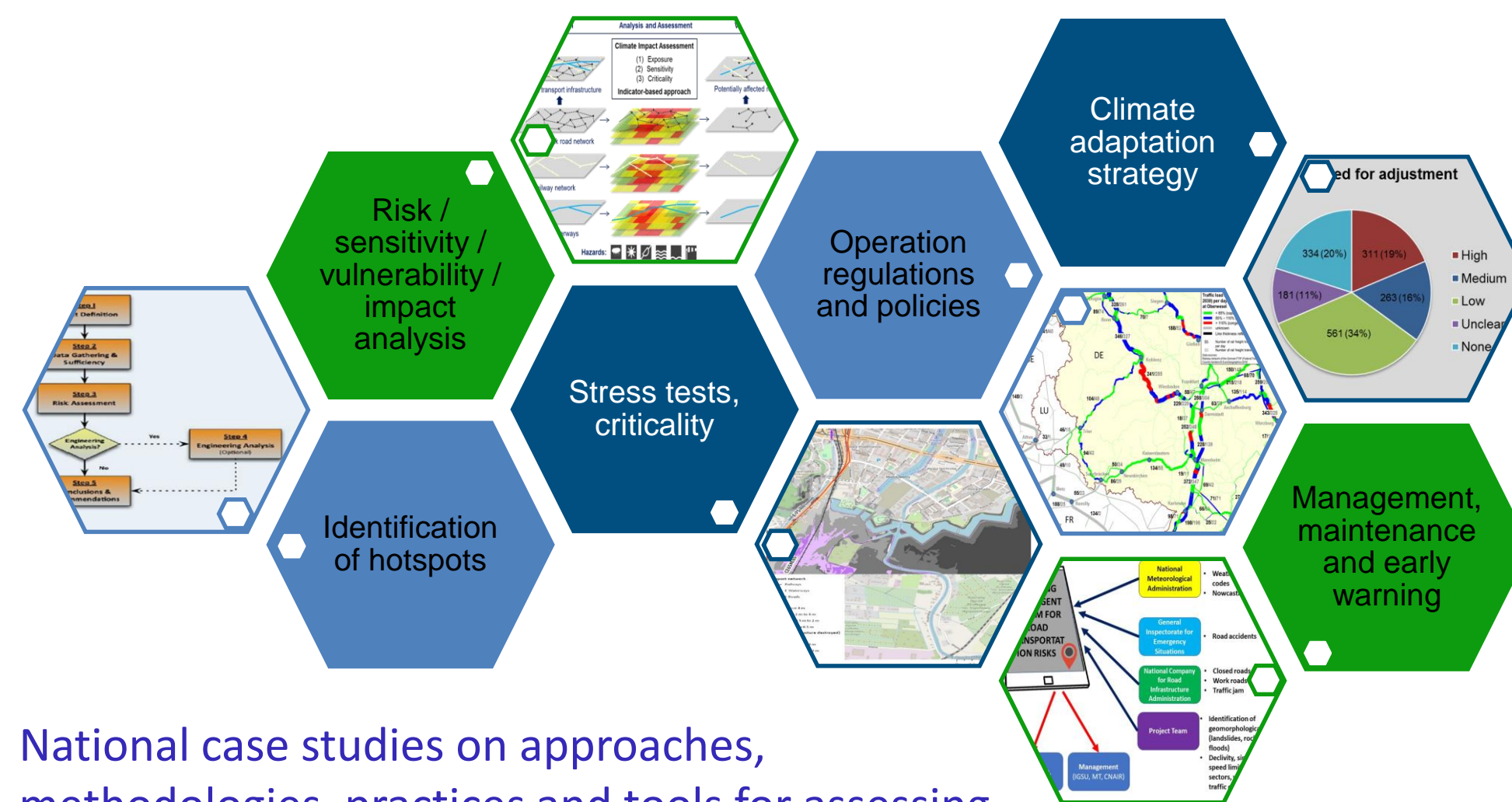
## From national to international research perspectives and back to local action

### BACKGROUND and MOTIVATION

To address the challenge of providing climate resilient transportation, national and international action is needed. This includes awareness rising, capacity building and activities with regard to future transport planning as well as the implementation of climate adaptation measures. In Germany, a research Network of Federal Agencies under the Federal Ministry of Digital and Transportation (BMDV) – the BMDV Network of Experts – addresses these challenges. The DAS core service “Climate and Water” forms the bridge from research to operational services to support the German national adaptation strategy (DAS). Experiences of these national networks are shared and discussed internationally within the UNECE Group of Experts on Assessment of Climate Change Impacts and Adaptation for Inland Transport and then feed back to the national networks.

### THE UNECE GROUP of EXPERTS

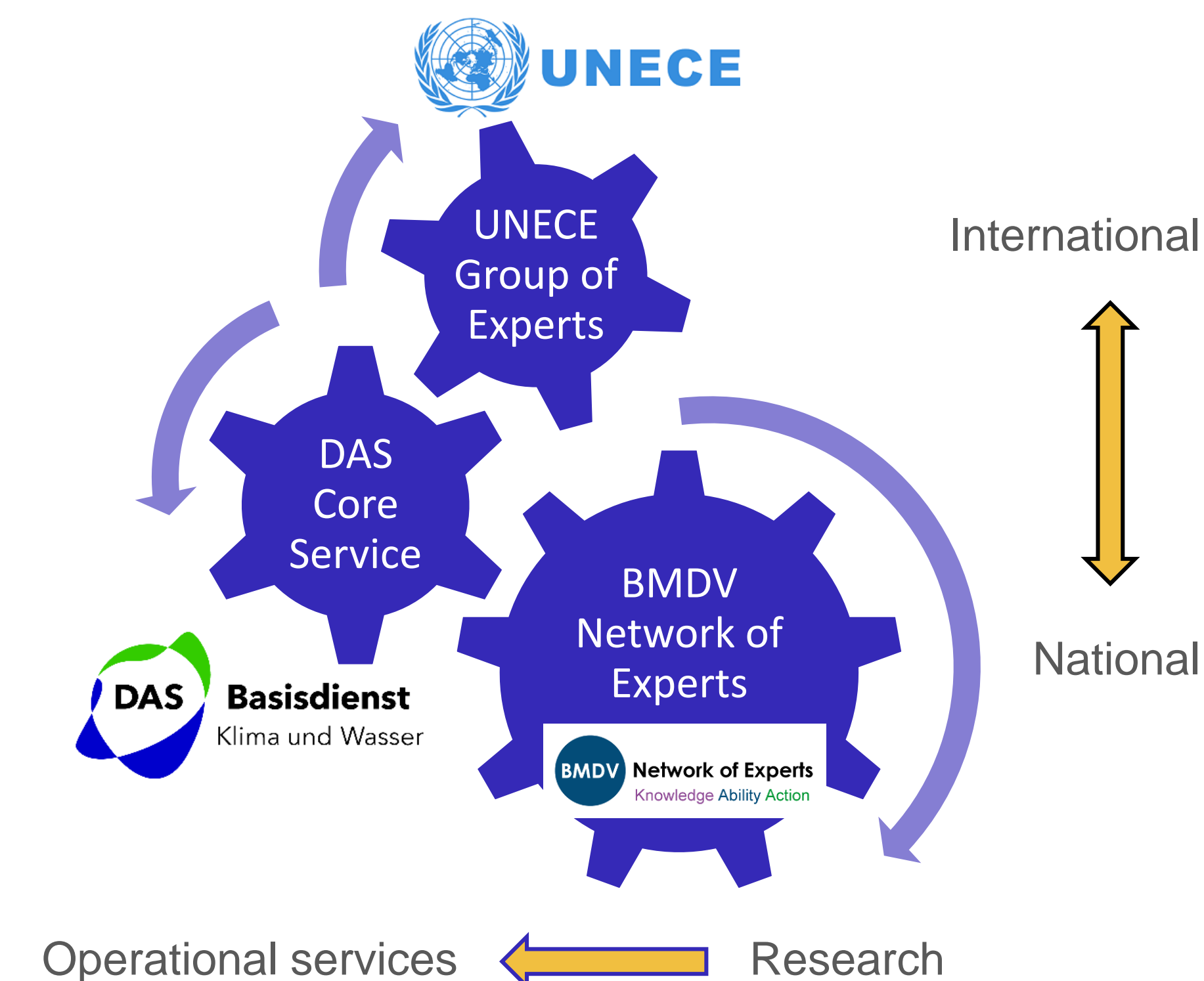
According to its current mandate (2020-25), the Group of Experts is tasked to raise awareness, build capacity and integrate knowledge from countries and the scientific community on climate change impact assessment and adaptation. Furthermore, it shall further advance the state of knowledge on, and the analysis of climate change impacts on inland transport, and the identification of suitable and cost-effective adaptation measures. Thereby, it serves as a platform to collect, integrate and disseminate knowledge and brings together transport and climate change adaptation specialists.



National case studies on approaches, methodologies, practices and tools for assessing climate change impacts and risks and adapting the transport infrastructure are an important input to the UNECE Group of Experts

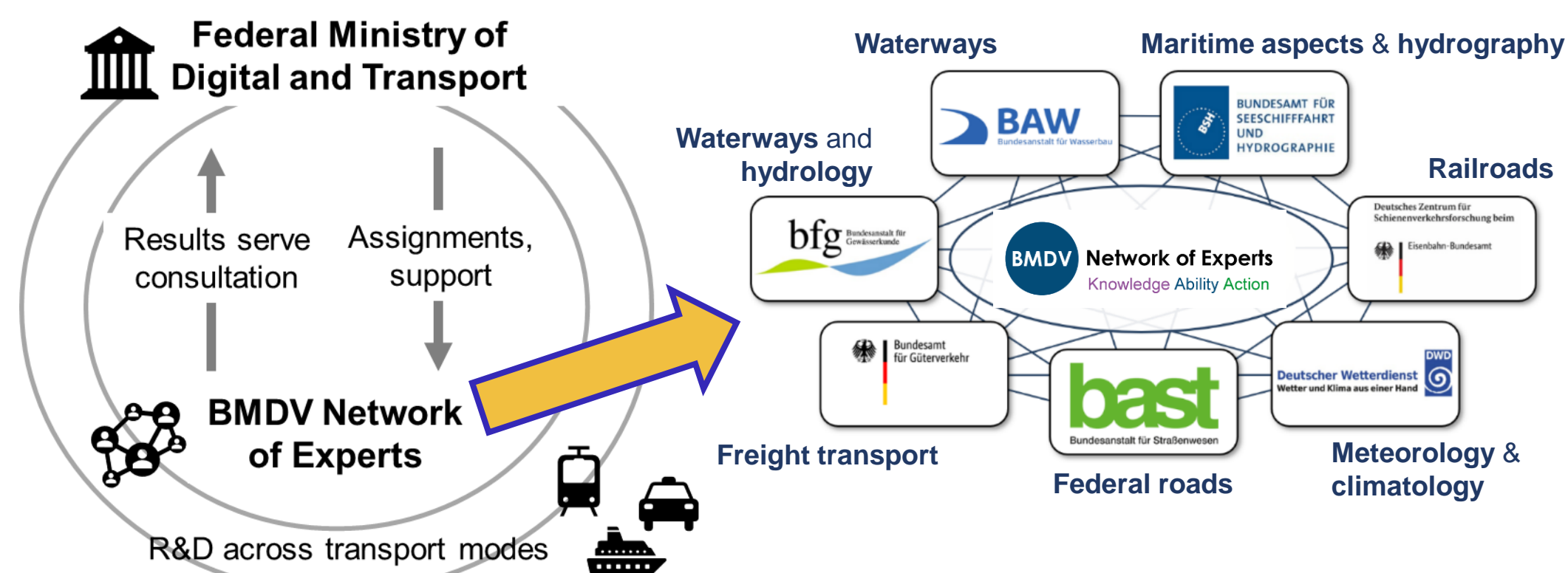
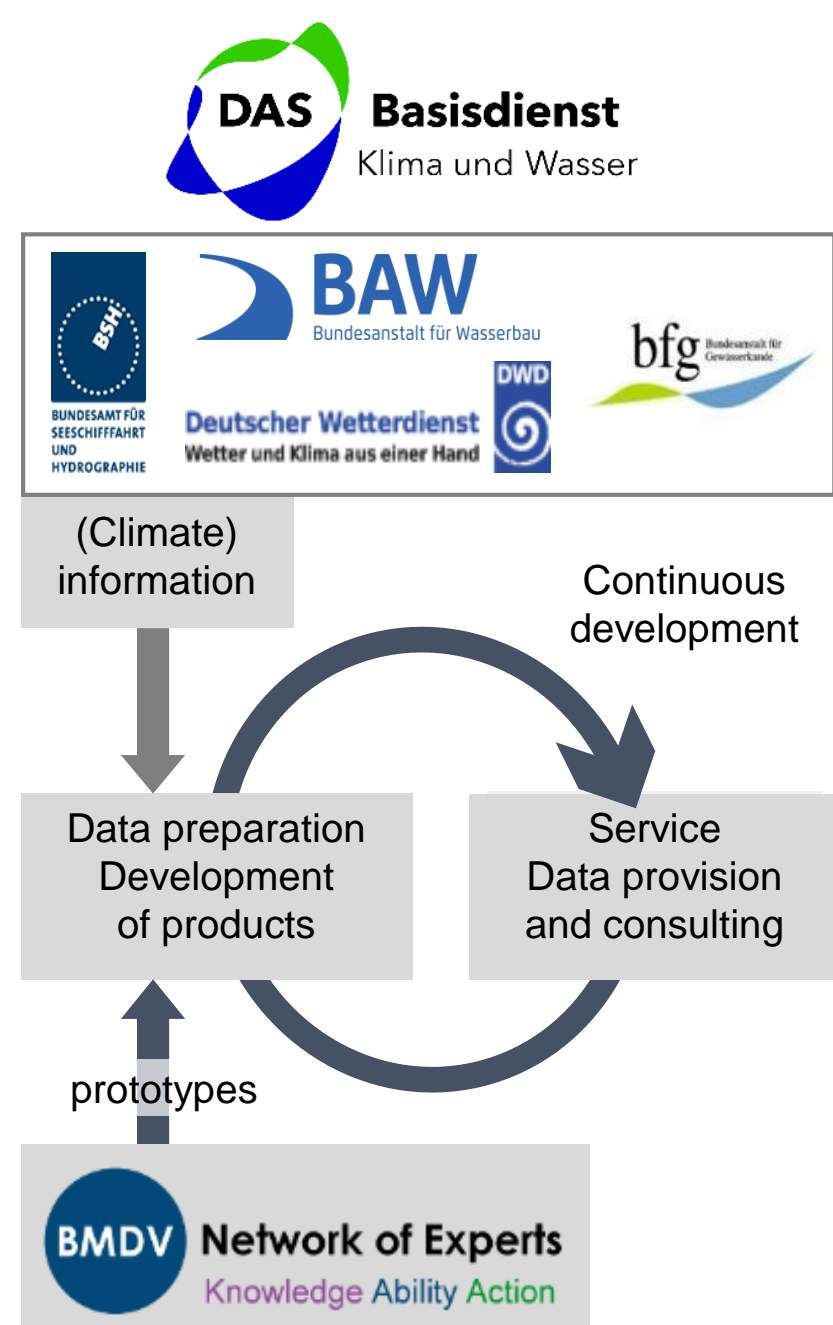
### THE GERMAN BMDV NETWORK of EXPERTS

The BMDV Network of Experts takes an inter-modal approach. Using coordinated base data (observations, projections, transport network) and methods for assessing climate impacts and risks ensures the comparability of obtained results and is important for balanced decisions on adaptation measures.



### DAS CORE SERVICE “CLIMATE AND WATER”

The German Adaptation Strategy DAS covers 14 fields of action – including transport infrastructure and mobility. The necessity of national data and consultation services is defined within the action plans that detail the adaptation strategy. Required for the adaptation of the transport system to the effects of climate change and extreme weather events are up-to-date and reliable data bases and information as well as operational services derived from them.



7 Research institutes and specialist authorities of the Federal Ministry of Digital and transport (BMDV) merge their expertise and consult the Ministry

**HOSTED AND ORGANISED BY:** ANI (AGÊNCIA NACIONAL DE INOVAÇÃO)

**CO-ORGANISED BY:** European Commission

**IN COOPERATION WITH:** IMT (INSTITUTO DA MOBILIDADE E DOS TRANSPORTES, I.P.), engenharia (CONSELHO DE ESCOLAS DE ENGENHARIA), magellan (European Affairs Consultancy)

**TOGETHER WITH:** ACARE, alice, CEDR, ECTP (EUROPEAN COLLABORATIVE TRANSPORT PARTNERSHIP), ERTRAC, ERRAC (The European Rail Research Advisory Council), OETRA (European Transport Research Board), WATERBORNE